

# journey zoomer<sup>®</sup>

**journey**  
HEALTH & LIFESTYLE



## Battery Instruction Guide

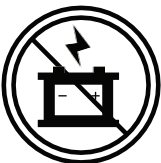
## SAFETY WARNING SIGNS



The battery contains corrosive substances. Handle with care.



Do not expose the battery to high heat for the risk of an explosion.



Keep tools and other metal object away from the battery connectors. It may cause a short circuit damaging the battery or electric shock causing injury.



The battery contains flammable substances. Avoid contact with an open flame or sources that create sparks. Avoid transporting the battery with other flammable goods.



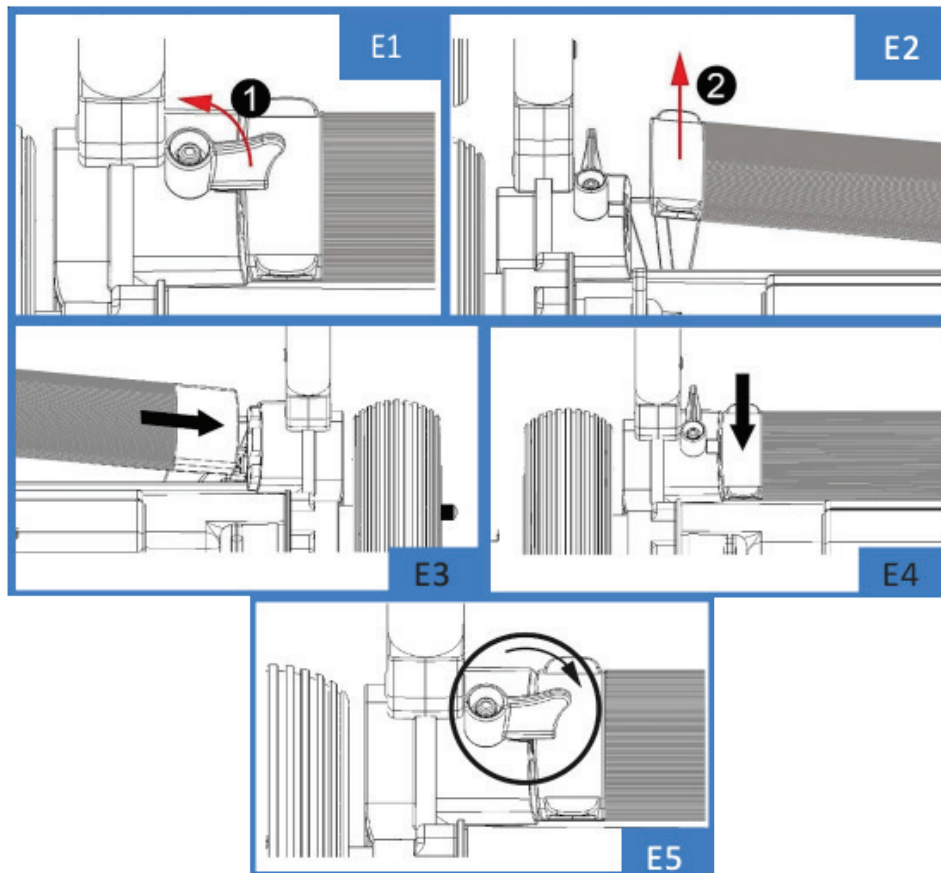
Do not discard the battery in the trash! Recycle it!

## Install/Remove the Battery

Before installing or removing the battery, the power must be switched off.

**Remove the Battery:** Rotate the battery's fixing button (Figure E1) and hold the battery handle, and then remove the battery from the battery base (Figure E2).

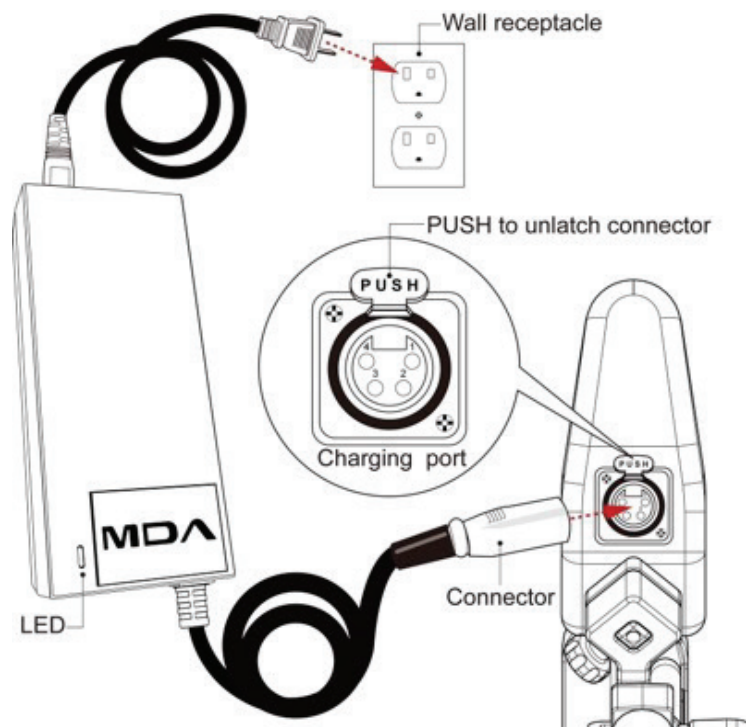
**Install the Battery:** Hold the battery handle and align it to the discharge socket (Figure E3). After aligning, the front end is downward, and it is pressed to the positioning (Figure E4), the battery's fixing knob can be rotated to the middle position (Figure E5).



## Charging the battery

The battery is charged by general AC power (AC 110-220V 50-60HZ). The charging port is located under the part in front of control panel.

1. Insert the separating charger with three-connector line into the port of charging under the front of control panel (Figure E6).
2. Insert the separating charger into the power socket, when LED shows green, it means the standby state; when the LED shows red after flashing, it means being charged.
3. When the charger LED becomes green from red, it has been fully charged.
4. After charging, it is recommended to unplug the charger plug from the power socket firstly, and then unplug the charger connector on the control panel.
5. When unplug the plug of the transfer power line group (extension line), press PUSH firstly, and then draw in the form of holding plug, do not pull the wires, it will break the copper line inside the wire.
6. Please charge batteries at the appropriate temperature. The recommended charging ambient temperatures is  $-5^{\circ}\text{C}$  ( $23^{\circ}\text{F}$ ) to  $40^{\circ}\text{C}$  ( $104^{\circ}\text{F}$ ).



## Optimal Charging Guidelines for Extending Lithium Battery Life:

1. Avoid charging to 100% every time
  - Consistently charging to 100% accelerates lithium battery aging.
  - It's recommended to charge only up to around 80–90%, unless a full charge is needed for long-distance travel.
2. Avoid fully depleting the battery before recharging
  - Consider charging once the battery drops below 20%.
  - Frequent deep discharges (e.g. using the battery until it shuts off automatically) can severely damage battery lifespan.
3. Use the original certified charger
  - Original chargers are designed with voltage and temperature protection tailored to the battery's characteristics.
4. Control the charging environment temperature
  - Lithium batteries charge best in temperatures between 15°C and 35°C.
  - Avoid charging in direct sunlight or extremely cold conditions (below 0°C).

### Occasionally perform a full charge cycle

- About every 1–2 months, it's beneficial to perform a full cycle from 100% > 50% > 100% to help the Battery Management System (BMS) recalibrate capacity.

## Battery Operating Temperature

The service life and performance of the battery is affected by the temperature, battery status, and the user's weight.

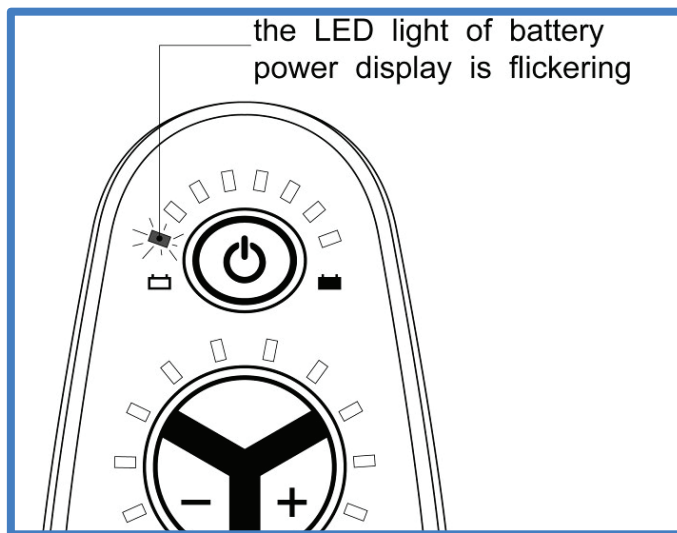
Before using, check whether the battery is fully charged. Normal charging time is about 4 hours. But if the battery runs out, it may take 5–6 hours to full charge, when the LED turns green from orange.

When not using the product for a long period of time, it should be charged once every two months. If the battery has not been charged for a long time, long-term damage will occur to the battery.

## Over-discharge Protector

If the battery is fully discharged, permanent damage to the lithium batteries will result. Therefore the ZOOMER® battery has an over-discharge protector. When the lithium battery is close to being exhausted the protector will automatically cut off the circuit, and the controller will stop working. So when you see the red LED light flickering, you need to charge the battery. Once you see the red light flickering, please charge the ZOOMER® battery within one week.

When the battery is out of power, please charge within one week.



## Reminder Safety Tips



- Check the battery allowance periodically to ensure that the battery can be charged immediately when in need of charging.
- Keep tools and metal items away from the battery's positive and negative pole. Otherwise, when a sudden connection of two poles occurs, it will lead to short-circuiting or electric shocking.
- When the ZOOMER® is not in use, please cut off the power supply, charge the battery and store it in a clean and dry place.

## Conditions to Avoid



- Always keep the battery in a clean and dry place.
- Keeping the battery in a controlled and acceptable environment is best in order to not reduce the life of it.
- Please avoid storing the battery in the following environments: where there is direct contact with water; extremely high or low temperatures; or in extreme humidity.
- Please do not spray-wash the battery with water.
- **Note:** If the battery does accidentally get exposed to water (or heavy moisture), wipe the battery down with a dry cloth and let battery dry naturally. Afterward, please contact your supplier to check its condition and confirm whether it is still safe for use.

## Battery Safety and Warnings



Keep metal tools and other metal items away from the battery terminals. Contact with them may cause a short circuit or an electric shock.



Keep batteries away from flammable materials. Avoid exposure to open fire and spark sources. Do not transport the battery and flammable or combustible goods together.



Corrosive substances are inside the battery. Do not dismantle the battery.



When the battery is being charged, place the mobility chair and battery charger in a well-ventilated place, away from any fire or sparks.

- Please do not use the pliers or metal cables to connect the terminal of the battery for charging.
- When the battery is charging, do not use chair or push the chair to avoid damage.
- Please do not use any charger other than the Zoomer charger.
- Please do not squeeze, bend, or yank the power line or knot the power line.
- Please do not smoke or set a fire around the battery.
- Keep the power cord away from children and pets.
- If any fault occurs in the circuit breaker, unplug the charger and contact customer service.
- The battery's operating temperature should be  $-5^{\circ}\text{C}$  ( $23^{\circ}\text{F}$ ) to  $40^{\circ}\text{C}$  ( $104^{\circ}\text{F}$ ).
- Do not expose the acid substances in the battery to the skin, clothing or other materials. The substance is extremely dangerous and can cause burns. If exposed, immediately rinse with cold water and seek medical treatment.
- Do not use this battery with any product other than the Zoomer, as it could lead to danger.